

A close-up photograph of a woven fabric, likely a textile sample. The fabric features a complex, textured pattern of interlocking blue and gold threads, creating a shimmering, three-dimensional effect. The lighting is soft, highlighting the intricate weave and the slight undulations of the material. In the upper center, there is a white square frame containing the text 'rOHI'. In the lower right corner, the word 'SHAKE' is printed in white capital letters.

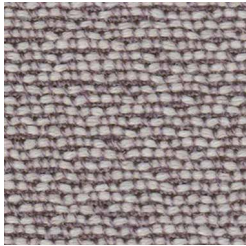
rOHI

SHAKE

SHAKE



chalk



porcelain



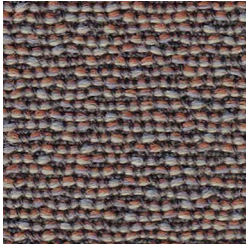
lake



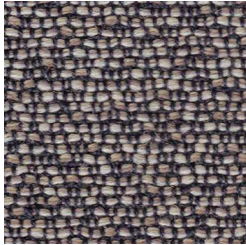
calla



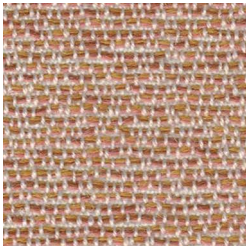
terra



hazelnut



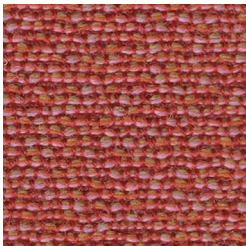
stone



clay



nougat



coral



malve



espresso



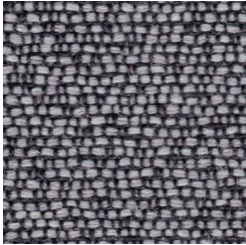
cherry



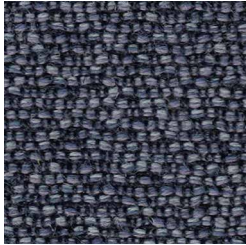
kandis



plaza



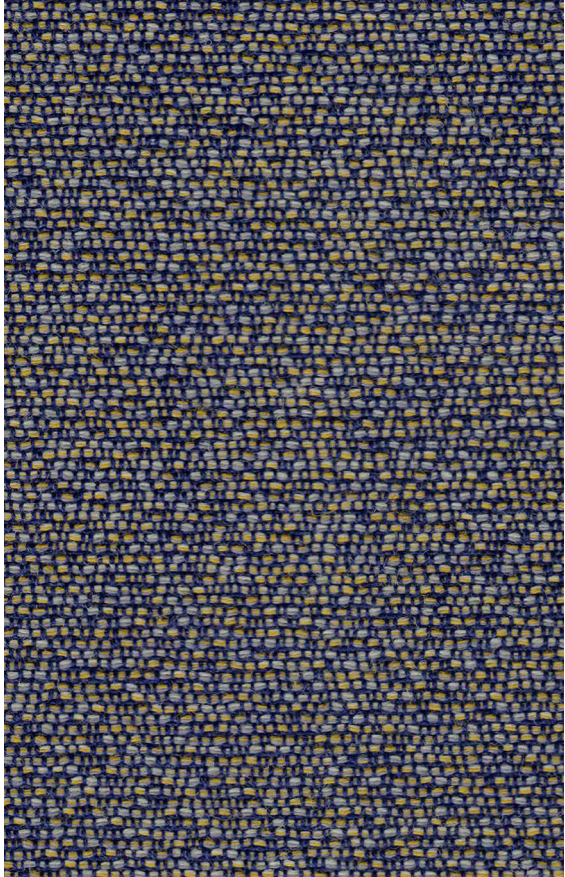
seal



carbon



anthrazit



galaxy



walnut



mountain



night



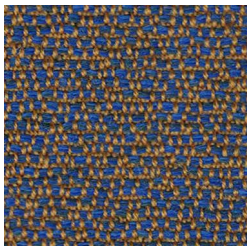
amur



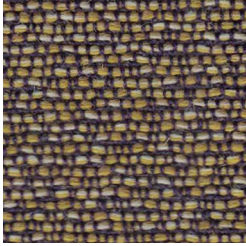
cobalt



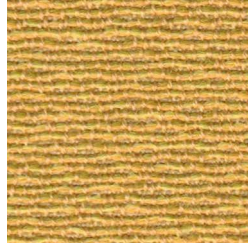
pepper



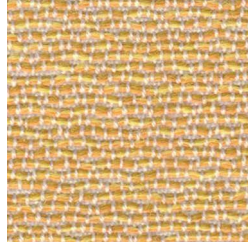
vivid



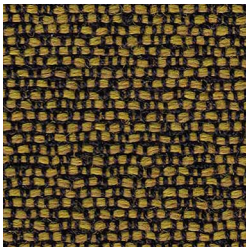
aurum



kurkuma



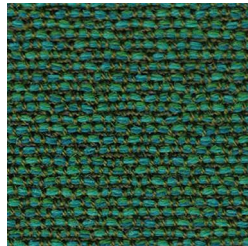
sol



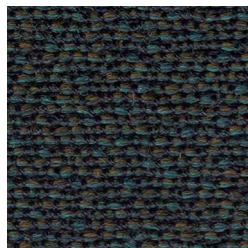
gold



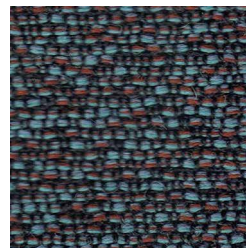
algae



bold



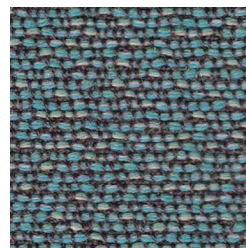
ivy



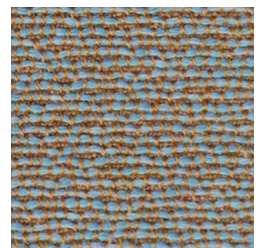
vulcan



fero



ray



jade

NATURAL MATERIAL
SOFT TOUCH
HIGHEND QUALITY
YARN DYED
VIRGIN WOOL
DESIGN
MANUFACTURE
EASY CARE
LASTING VALUE



GEWEBEBESCHREIBUNG

Dessin: SHAKE
Material: 95% WV 5% PA
Gewicht ca.: 440 g/m² - 660 g/lfm
Breite ca.: 150 cm

QUALITÄTSBESCHREIBUNG

Scheuerfestigkeit: ≥ 70.000 Touren DIN EN ISO 12947-2
Flammschutz: bitte angeben
FAR 25.853 (12 Sek. vertikal)
CAL TB 117 - 2013
DIN 4102-1 B2
DIN EN 13501-1
DIN EN 1021 -1 und -2
BS 5852:1979 (part1)
BS 5852:2006 (part2) Crib5
BKZ: 5.3 SN 198898
UNI 9175 (1 IM)
ÖNORM B1 / Q1
IMO: 2014/90/EU Schiffsausrüstungsrichtlinie
Akustik: R_s=455 Pa s/m ISO 9053-1 Strömungswiderstand
Schallabsorption: gerafft: α_w = 0,80 / B / ISO 11654
Ökologie: RAL-UZ 117 Anlage 2+3
Lichtechtheit: ≥ 5 DIN EN ISO 105-B02
Pilling: ≥ 4-5 DIN EN ISO 12945-2
Dimout Option auf Anfrage

QUALITÄTSMERKMALE – ROHI WOLLE

natürlich nachwachsender Rohstoff
Wolle ist von Natur aus schwer entflammbar,
pflegeleicht, atmungsaktiv und schmutzabweisend
langlebig, hoch strapazierfähig
reine Schurwolle – Kammgarnqualität

QUALITÄTSMERKMALE – ROHI STOFFE

Garnfärbung für bestmögliche Farbbrillanz
und hohe Lichtechtheit
Spezialausrüstung gegen Schrumpf und Pillneigung
Produktion und Design in Deutschland seit 1933
individuelle Stoffentwicklung
für Architektur- und Designkonzepte

DESCRIPTION OF FABRICS

Design: SHAKE
Content: 95% WV 5% PA
Weight approx.: 440 g/m² - 660 g/lm
Width approx.: 150 cm

QUALITY DETAILS

Abrasion: ≥ 70.000 rubs DIN EN ISO 12947-2
Flammability: please specify
FAR 25.853 (12 sec. vertical)
CAL TB 117 - 2013
DIN 4102-1 B2
DIN EN 13501-1
DIN EN 1021 -1 and -2
BS 5852:1979 (part1)
BS 5852:2006 (part2) Crib5
BKZ: 5.3 SN 198898
UNI 9175 (1 IM)
ÖNORM B1 / Q1
IMO: 2014/90/EU Marine Equipment Directive (MED)
Acoustic: R_s=455 Pa s/m ISO 9053-1 flow resistivity
Sound absorption: folded: α_w = 0.80 / B / ISO 11654
Ecology: RAL-UZ 117 Attachment 2+3
Lightfastness: ≥ 5 DIN EN ISO 105-B02
Pilling: ≥ 4-5 DIN EN ISO 12945-2
Dimout option on request

QUALITY CHARACTERISTICS – ROHI WOOL

natural, renewable material
wool is flame retardant, easy-care,
breathable and dirt resistant
long-lasting, hard wearing
virgin wool – worsted yarn quality

QUALITY FEATURES – ROHI FABRICS

yarn dyed for brilliant colours and
good lightfastness
special finish: anti-shrink, anti-pilling
production and design 'Made in Germany' since 1933
development of individual fabrics for
architects' and designers' concepts



aktuellste Spezifikationen /
latest specifications:
rohi.com/shake